

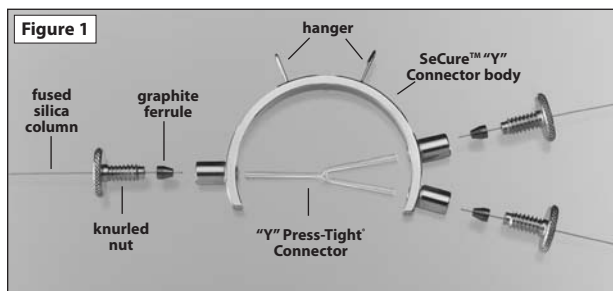
SeCure™ “Y” Connector

Kits include: SeCure™ “Y” connector body, 3 knurled nuts, 1 “Y” Universal Press-Tight® union, and 3 graphite ferrules

Description	Ferrules Fit Restek Column ID	qty.	cat.#
SeCure™ “Y” Connector Kit	0.25/0.28mm	kit	20276
SeCure™ “Y” Connector Kit	0.28/0.32mm	kit	20277
SeCure™ “Y” Connector Kit	0.45/0.53mm	kit	20278
Knurled nut		3-pk.	20279

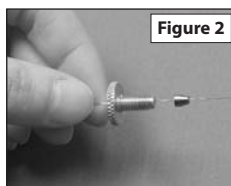
Overview

The SeCure™ “Y” Connector (Figure 1) is a Press-Tight® connector that incorporates graphite ferrules to ensure the columns do not unexpectedly disconnect after establishing a good seal between the fused silica column and the radial restriction in the glass Press-Tight® “Y”. The open design allows the user to visually confirm the presence of a seal at the column-glass insert connection.

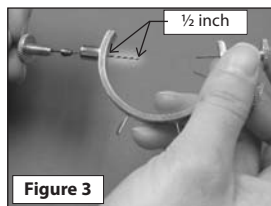


Installation

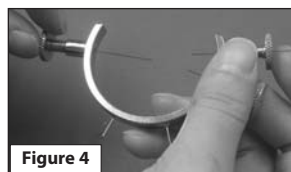
1. Slide a knurled nut and ferrule onto one fused silica column. Install the ferrule with the tapered end facing toward the end of the column (Figure 2). Always point the column end downward while installing a ferrule, so that ferrule fragments do not fall into the column bore.



2. Slide the column through the body of the SeCure™ “Y” Connector until approximately ½ inch (1½ cm) of the column is within the connector body (Figure 3).

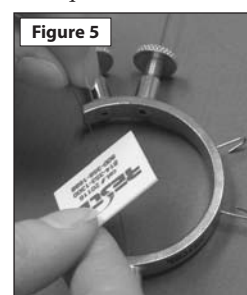
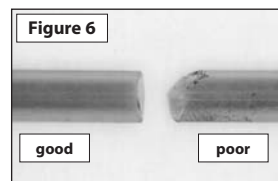


3. Gently tighten the finger-tight nut to seat the graphite ferrule. Do not fully tighten the nut at this time. The column should slide forward and back if the knurled nut is loosened.



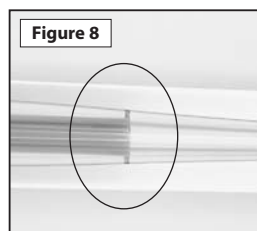
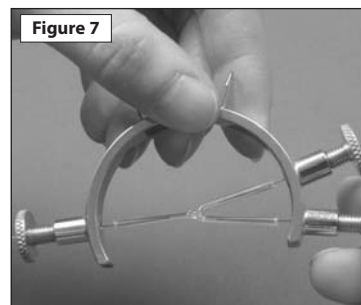
4. Repeat steps 1-3 for the other two columns (Figure 4).

5. Cut the column ends. We recommend using a ceramic scoring wafer (cat.# 20116 or 23015) or sapphire scribe (cat.# 20182) (Figure 5); pointed scoring devices tend to produce jagged cuts (Figure 6). Verify a square cut by using a pocket magnifier (cat.# 20124) to inspect the end of the tubing. The edge must be square, or the connection between the column and the Press-Tight® connector will leak.



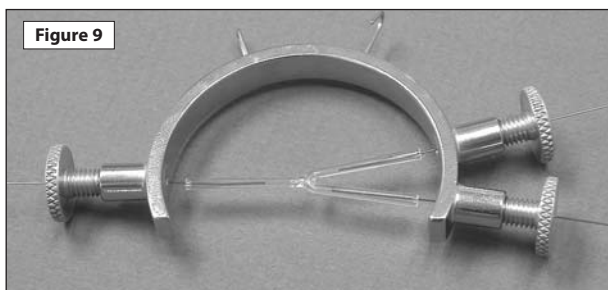
6. Remove finger oils and lubricate the column end by wiping the end with a laboratory wipe wetted with methanol or acetone. This will enable the tubing to slide more easily into the Press-Tight® connector, and will help ensure a good seal.

7. Loosen the knurled nuts to allow the columns to slide freely. Install the columns in the Press-Tight® connector by gently pressing each column end into the connector until the column is held firmly by the radial constriction in the connector (Figure 7). Do not press too hard, or the column end can be crushed within the connector.



A continuous brown ring around the column edge, where it contacts the connector, indicates a proper connection (Figure 8).

8. Tighten the three knurled nuts evenly. Do not overtighten. The assembled connector should look like the example in Figure 9.
Hang the SeCure™ “Y” Connector from the column cage, to minimize stress on the connections, as shown in Figure 10.



9. Set the column head pressure, then check the connector for leaks, using a thermal conductivity-type leak detector, such as Restek's Leak Detector (cat.# 22839). Do not use a liquid leak detector – liquids can enter a connection if the seal is incomplete, and could damage the column.
10. After confirming the connections are good, bring the oven temperature to 225°C for approximately 5 minutes, to soften the coating on the columns and help make the seals permanent. Be sure this temperature does not exceed the maximum operating temperature for your column.

Tech Tip: If a ferrule becomes lodged in the SeCure™ “Y” Connector body, simply use a septum puller (cat. #20117) to remove it.



Replacement Parts

Graphite Ferrules for SeCure™ “Y” Connectors*

Ferrule ID	Fits Restek Column ID	Graphite 10-pk.	Graphite 50-pk.
0.4mm	0.25/0.28mm	20200	20227
0.5mm	0.28/0.32mm	20201	20228
0.8mm	0.45/0.53mm	20202	20224

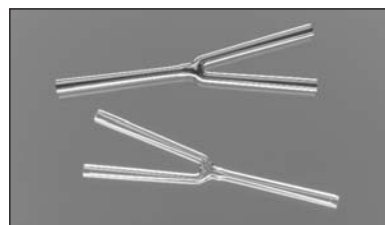
*Stable to 450°C.



Universal “Y” Press-Tight® Connectors**

Description	ea.	3-pk.
Universal “Y” Press-Tight Connector	20405	20406
Siltek-treated Universal “Y” Press-Tight Connector	20485	20486

**Fit column ODs from 0.33–0.74mm (Restek 0.1mm–0.53mm ID).



Restek trademarks: Press-Tight, Restek logo, SeCure, Siltek

Call Technical Service at 800-356-1688 or 814-353-1300, ext.4 (or your Restek representative) if you have any questions about this product or any other Restek product.



ISO 9001:2000 #202-02 [005]
Rev: 07/2008

Restek U.S. • 110 Benner Circle • Bellefonte, PA 16823

phone: 814-353-1300 or 800-356-1688 • fax: 814-353-1309 • www.restek.com

Restek France • phone: 33 (0)1 60 78 32 10 • fax: 33 (0)1 60 78 70 90 • e-mail: restek@restekfrance.fr

Restek Ireland • phone: 44 2890 814576 • fax: 44 2890 814576 • e-mail: restek@restekfrance.fr

Thames Restek U.K. LTD • phone: 44 1494 563377 • fax: 44 1494 564990 • e-mail: sales@thamesrestek.co.uk

Restek GmbH • phone: +49 (0) 6172 2797 0 • fax: +49 (0) 6172 2797 77 • e-mail: info@restekgmbh.de