

## 3. Maintenance

Regularly check both the big and small O-rings on the Click-On connectors for hair cracks. The slightest leak may allow moisture, oxygen, and hydrocarbons to enter the system and contaminate the gas.

## 4. Disposal



Saturated traps should not be placed in household waste bins. Please check local regulations for information about the disposal of chemical waste in your area.

Never recondition any filter cartridge: for recycling, please contact your local supplier.

## 5. Overview

Super Clean Big Traps are suited for the purification of noncorrosive gases with low contamination concentrations to a better than 6.0 grade (99.99990%) purity.

Super Clean Big Traps are connected to an appropriate genuine Click-On connector, which is installed into the gas line.

## 6. Specifications

Big Trap Model	H <sub>2</sub> O (g)	O <sub>2</sub> (ml)	THC (g)	CO <sub>2</sub> (g)	Usable for (Gas Type)
Moisture	210	-	-	-	C, A, H <sub>2</sub>
Oxygen	-	4500	-	-	C
Hydrocarbon	-	-	360	-	C, A, H <sub>2</sub>
Carbon dioxide	-	-	-	450	C, A
Combi. (Moisture + Hydrocarbons)	105	-	180	-	C, A, H <sub>2</sub>
Combi. (Moisture + Oxygen)	105	2250	-	-	C, H <sub>2</sub>
Combi. (Moisture + Carbon dioxide)	105	-	-	225	C, A
Triple (Moisture + Oxygen + Hydrocarbons)	70	2000	120	-	C, He,* H <sub>2</sub> *

C = Inert Carrier Gas; He = Helium; H<sub>2</sub> = Hydrogen; A = Air  
\* = Gas Specific Trap Available

All traps are packed under argon, except for the special He-specific and H<sub>2</sub>-specific trap.

Maximum Inlet Pressure: 11 bar

Maximum flow: 25 L/min

Gas Quality at outlet: > 6.0 grade purity

## 7. Safety Information

- The maximum concentration of oxygen allowed in the gas is 0.5%. (Valid only for each trap packed with O<sub>2</sub>-adsorbent).
- Maximum gas-system pressure should never exceed 11 bar (160 psi).
- Do not install a Big Trap near or in a hot area (i.e., the hot-air exhaust at the rear of the GC).

## 8. Ordering Information

### Click-On Inline Connectors

- 22477** Click-On Connector Set - 1/4" Brass
- 22475** Click-On Connector Set - 1/8" Brass
- 22478** Click-On Connector Set - 1/4" Stainless Steel
- 22476** Click-On Connector Set - 1/8" Stainless Steel
- 22479** Click-On Double Connector

### Click-On Inline Big Trap Replacement Traps

- 27204** Triple (Moisture+Oxygen+Hydrocarbon) He Big Trap
- 27205** Triple (Moisture+Oxygen+Hydrocarbon) Big Trap
- 27206** Hydrocarbon Big Trap

### Click-On Inline Big Trap Installation Kits

- 27201** Triple (Moisture+Oxygen+Hydrocarbon) He Big Trap Kit - 1/4" Stainless Steel
- 27202** Triple (Moisture+Oxygen+Hydrocarbon) He Big Trap Kit - 1/8" Stainless Steel
- 27203** Hydrocarbon Big Trap Kit - 1/4" Stainless Steel

### Click-On Inline Big Trap Spare Parts

- 22481** Replacement O-ring set for Click-On Connectors
- 27207** Wall-mounting Clamp Set for Click-On Big Trap

# RESTEK

## Super Clean Click-On Big Trap

### Instructions for Use



Patent pending: PCT/NL2012/050477

**Questions about this or any other Restek product?**  
**Contact us or your local Restek representative**  
**([www.restek.com/contact-us](http://www.restek.com/contact-us)).**

Restek patents and trademarks are the property of Restek Corporation. (See [www.restek.com/Patents-Trademarks](http://www.restek.com/Patents-Trademarks) for full list.) Other trademarks in Restek literature or on its website are the property of their respective owners. Restek registered trademarks are registered in the U.S. and may also be registered in other countries.

© 2024 Restek Corporation.  
All rights reserved.

[www.restek.com](http://www.restek.com)

#204-08-020 Rev. date: 12/24

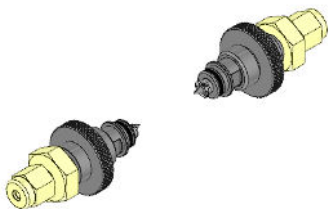
**RESTEK**  
Pure Chromatography



[www.restek.com](http://www.restek.com)

# 1. Installation of the Click-On Connectors

Click-On connectors are available for 1/8" and 1/4" outer tubing sizes and both sizes are available in stainless steel or brass.



## 1.1 Important Information Before You Start

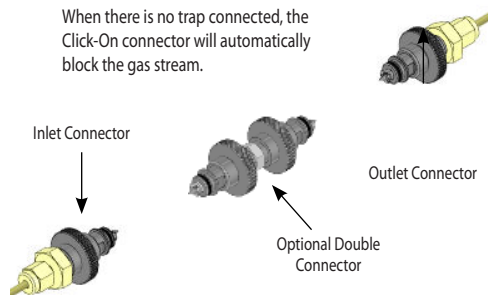
- To avoid leakage, never install brass connectors on stainless steel tubing.
- Installation of the connector should always be done by trained personnel.
- After installation, do not forget to perform a reliable leak test.
- Only use genuine Click-On connector parts.

1. Switch off the incoming gas.
2. Disconnect the gas line from the analytical instrument.
3. Cut the gas line using an appropriate metal tubing cutter.



4. Connect the Click-On connectors into each end of the gas line. Finger tighten the connectors, add an additional 1/4 turn with the wrench, and then leak check with an electronic leak detector.

When there is no trap connected, the Click-On connector will automatically block the gas stream.



5. Turn the carrier gas on, depress the check valve, and flush the gas line with pure carrier gas; advised pressure: 90 psi.

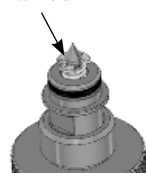
# 2. Installation of a Big Trap

## 2.1 Important Information Before You Start

- Never install an oxygen Big Trap in a gas line for air. It will result in instant saturation!
- Make sure that the temperature of the replacement trap is more or less identical to the temperature of the (already installed) Click-On connectors on your gas line to avoid any leakage in connections. If the temperature is not identical, use at least one-hour stabilization time in the same room as the connectors.
- **Restek Recommends:** To ensure optimal bed packing and performance, and to minimize the likelihood of material "channeling," gas filters should be installed vertically.

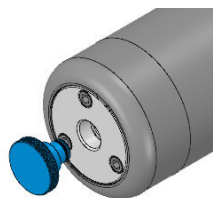
## 2.2 Install the Inlet Side of the Trap

Push here.

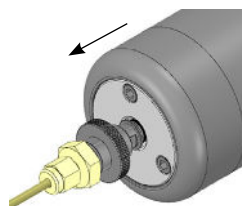


**For new installation:** Flush the inlet connector by pushing down the needle valve. Please note: sharp edges!

Remove the blue closing plug from the **inlet** of the trap.

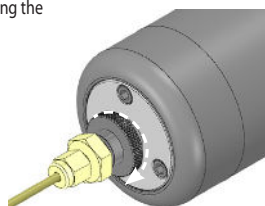


**For gas-specific traps:** After removing the blue closing plug it is VERY IMPORTANT that the open trap is only exposed to the air as little as possible to avoid contamination of the trap.



Position the trap into the **inlet** connector.

Tighten the connector by turning the knurled ring clockwise.

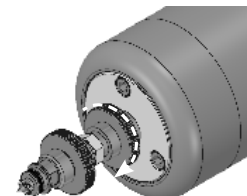
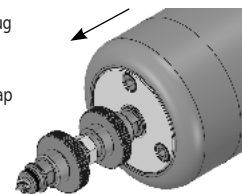


## 2.3 Install a Click-On Double Connector (Optional)

If you are not using a Click-On double connector in combination with an additional (indicating) trap, please skip this step and proceed to step 2.4.

Remove the blue closing plug from the **outlet** of the trap.

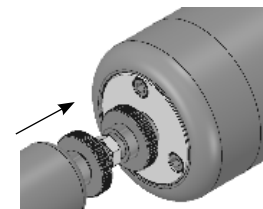
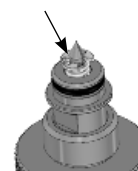
Position the **outlet** of the trap into one side of the double connector.



Tighten the connector by turning the knurled ring clockwise.

Flush the double connector and trap by pushing down the needle valve. Please note: sharp edges!

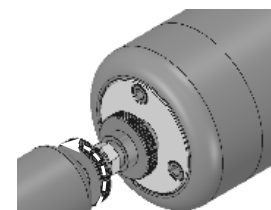
Push here.



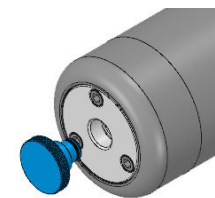
Remove the blue closing plug from the **inlet** of the connecting trap.

Position the **inlet** of the connecting trap into the outlet side of the double connector.

Tighten the connector by turning the knurled ring **counterclockwise**.



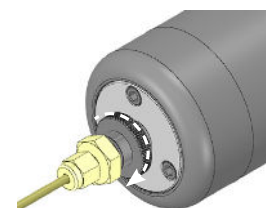
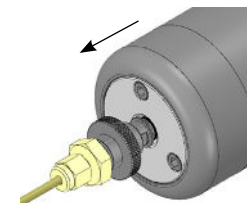
## 2.4 Install the Outlet Side of the Trap



Remove the blue closing plug from the **outlet** of the trap.

**For gas-specific traps:** After removing the blue closing plug it is VERY IMPORTANT that the open trap is only exposed to the air as little as possible to avoid contamination of the trap.

Position the trap into the **outlet** connector.



Tighten the connector by turning the knurled ring clockwise.

**For new installation:** Flush the trap/whole system for 15 min with pure carrier gas—advised pressure: 90 psi—then mount the outgoing carrier gas line back to the analytical system, and you are ready to go.

After installation, do not forget to perform a reliable leak test.