

Restek is pleased to offer the reusable EXP2 fitting system from Optimize Technologies for the ultimate in easy, reliable LC connections!

- Unique nut driver allows easy 20,000+ psi seals without wrenches.
- Patented ferrule can be installed repeatedly without compromising high-pressure seal.
- Cutting-edge system provides zero-dead-volume (ZDV) connection to any 10-32 port.
- Compact design fits in tight spaces, perfect for small oven compartments and 6-port injection valves.
- Non-swaged ferrules mean vendor-specific tubing is not required.
- Suitable for both HPLC and UHPLC.

For replacement ferrules and additional EXP products, visit **[www.restek.com/exp](http://www.restek.com/exp)**

**Questions about this or any other Restek product?**  
**Contact us or your local Restek representative**  
**([www.restek.com/contact-us](http://www.restek.com/contact-us)).**

**RESTEK**



© 2020 Restek Corporation.  
All rights reserved.  
Printed in the U.S.A.

#730-20-004  
Rev. date: 11/20



**OPTIMIZE**  
TECHNOLOGIES

[www.optimizeotech.com](http://www.optimizeotech.com)

Intellectual Property: [optimizeotech.com/patents](http://optimizeotech.com/patents)

# EXP2 Fittings

Slim-profile nut,  
EXP ferrule, and  
nut driver offers tool-  
free, repeated ZDV,  
20,000+ psi connections

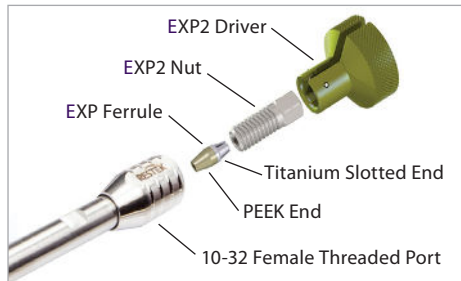


for 10-32 fittings  
and 1/16" tubing

**RESTEK**

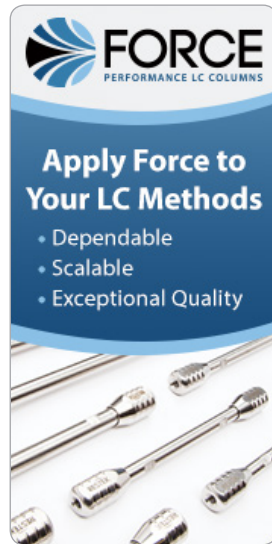
**WARNING:** Do not use EXP ferrules with standard nuts. Failure to use EXP fittings according to these instructions may result in unsafe UHPLC connections and/or non-ZDV connections. **EXP2 Fittings are not recommended for use with PEEK tubing.**

1. The EXP ferrule contains a slotted titanium cone on one end and a PEEK sealing cone on the other. When installed correctly, the titanium slotted end faces the EXP nut and the PEEK end faces the female threaded port that you are connecting to the  $\frac{1}{16}$ " stainless-steel tubing.



2. Slide the EXP2 nut and EXP ferrule onto the  $\frac{1}{16}$ " stainless-steel tubing.
3. Push the tubing into the female threaded port.
4. Keep the tubing fully bottomed in the port and hand tighten the EXP2 nut.
5. Slide the EXP2 driver over your tubing above the EXP2 nut, then slide the driver down onto the nut. You will feel the driver click onto the nut when properly seated.
6. For first-time connections (connections made using a new EXP ferrule), using the EXP2 driver, tighten the nut a minimum additional 180°. When remaking a connection (reusing an EXP ferrule), using the EXP2 driver, tighten the nut a minimum additional 90°.

**NOTE:** The PEEK end of the EXP ferrule will deform from repeated tightening, but the resulting UHPLC connection will still perform well for many repeat uses when installed according to these directions.



[www.restek.com/force](http://www.restek.com/force)