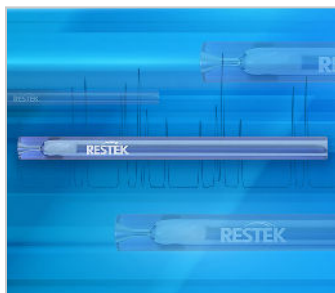


Get the Most Out of Narrow-Bore GC Columns with Intermediate-Volume (IV) Liners



The benefits of high-efficiency, narrow-bore GC columns are limited by sample transfer onto the column, but this step can now be optimized using Restek's intermediate-volume (IV) inlet liners. With higher sample capacity than smaller volume liners and faster sample transfer than larger volume liners, new IV liners produce fast, sensitive, and highly reproducible results. The more balanced performance improves chromatography, making peak identification and quantitation easier and more accurate. In addition, the short residence time in the inlet protects against band broadening and analyte breakdown during splitless injection. Explore our IV liner applications for semivolatiles, PAHs, and pesticides and see how to get the most out of narrow-bore GC columns!

www.restek.com

Restek Corporation
www.restek.com
1-814-353-1300, ext. 3

Restek patents and trademarks are the property of Restek Corporation. (See www.restek.com/Patents-Trademarks for full list.) Other trademarks in Restek literature or on its website are the property of their respective owners. Restek registered trademarks are registered in the U.S. and may also be registered in other countries. To unsubscribe from future Restek communications or to update your preferences, visit www.restek.com/subscribe To update your status with an authorized Restek distributor or instrument channel partner, please contact them directly.

© 2024 Restek Corporation. All rights reserved. Printed in the U.S.A.

GNPR4209-UNV